



4 Edwards Pill

Llangwm, Pembrokeshire, SA62 4JD

OIRO: £260,000 | Freehold | EPC: TBC



Situated in the sought-after village of Llangwm, this beautifully presented two-bedroom cottage enjoys an exceptional position just moments from the estuary at Llangwm Pill. With stunning water views and a rich history as a former local museum, the property is full of character and charm, making it an ideal full-time residence or a highly desirable holiday home.

Originally a fisherman's cottage, it has been sympathetically extended to provide additional living space while retaining its period features. A traditional stable door opens into an entrance hallway laid with Welsh slate flooring, complemented by stained glass windows. The sitting room continues the slate flooring and features an ornate open fireplace with recessed cabinetry and downlighting. The kitchen is well-appointed with a Rayburn with wick burner, solid wood cabinetry, and space for dining. A separate lounge provides an additional reception area, enhanced by a log burner and exposed ceiling beams, while a utility room adds further practicality to the ground floor plan. Upstairs, two well-proportioned bedrooms each benefit from fitted wardrobes, with a bathroom serving the accommodation. A converted loft provides additional space, ideally suited as a playroom or for further storage.

A gravelled driveway allows for motorbike / boat access (69 inch width), with vehicle parking available in the car park to the fore. The front patio, enclosed by a stone dwarf wall, provides a superb setting for outdoor seating. A natural pond and stream run through the property, crossed by a bridge and archway leading to the outbuildings. Formerly part of the museum, the garages provide secure storage or potential workshop space. A covered BBQ area with estuary views and log store have been incorporated, while period memorabilia, including a telephone box, signage, small scale signal box and a section of railway track, contribute to the setting. Stone steps lead to the elevated rear garden, which is mainly laid to lawn and bordered by mature trees, shrubs, and fencing, with a potting shed providing outdoor storage.

Located on Edwards Pill in the heart of Llangwm, the property benefits from an enviable position within a village recognised by *The Sunday Times* as one of the "best places to live". Just a stones throw from the estuary, residents can enjoy picturesque waterside and countryside walks, with dinghy launching available within 100 metres of the property. Llangwm offers a range of amenities, including a public house, sports club, highly rated junior school, and an outreach surgery, fostering a strong sense of community. Haverfordwest is just seven miles away, providing access to a train station, hospital, leisure centre, supermarkets, and a selection of retail outlets.



Entrance Hallway

A solid wood stable door with stained glass opens into the hallway, featuring welsh slate flooring and a stained glass window to the side aspect. Doors lead to the kitchen and utility room.

Sitting / Dining Room

4.72m x 2.85m (15'6" x 9'4")

Welsh slate flooring extends throughout, with windows to the front and side allowing for natural light. An open fireplace with an ornate surround and oak mantle serves as a central feature, complemented by recessed cabinetry with down lights and exposed ceiling beams.

Utility Room

3.76m x 1.92m (12'4" x 6'4")

Tiled flooring, base-level units with worktops and a sink, and velux windows providing additional light. A laundry maid offers drying space, with provisions for a washing machine and tumble dryer. A door leads to steps accessing the rear garden.

Kitchen

4.41m x 4.00m (14'6" x 13'1")

Fitted with base-level units, worktops, and eye-level shelving incorporating plate racks and cabinetry. A Rayburn with a wick burner and hot plate is installed, with a sash window to the front aspect and an additional side window overlooking the utility space. Exposed ceiling beams enhance the character, while ample space allows for a dining table. A staircase leads to the upper floor, and a door opens to the front patio.

Lounge

3.91m x 2.68m (12'10" x 8'10")

A sash window to the front provides natural light. The log burner is set within an ornate surround with a slate hearth and oak detailing. Exposed ceiling beams contribute to the character of the space.

Bedroom One

4.26m x 2.99m (14'0" x 9'10")

A well-proportioned double bedroom with carpet underfoot, fitted wardrobes, and a sash window to the front aspect.

Bedroom Two

4.26m x 2.51m (14'0" x 8'3")

A single bedroom, also featuring fitted wardrobes and a sash window to the front aspect. A staircase provides access to the storage loft / playroom.

Bathroom

1.94m x 1.69m (6'4" x 5'7")

Solid wooden flooring, panelled bath, WC, and sink with a mirrored cabinet above. A sash window faces the fore aspect.

Storage Loft / Playroom

5.58m x 3.29m (18'4" x 10'10")

A versatile space with carpet underfoot, a panelled ceiling, and a velux window. Height restricted, with integrated eave storage adding functionality.

External

A gravelled driveway provides small vehicle / boat access (69 inch width) with additional parking available in the car park to the fore. The front patio, enclosed by a stone dwarf wall, offers an ideal outdoor seating area. A natural pond and stream runs through the property, crossed by a bridge and archway leading to the three outbuildings. Previously operated as a local museum, the garages offer space for secure storage or workshop use. A covered BBQ area with estuary views and log store has been incorporated, while various memorabilia, including a telephone box, signage, small scale signal box and a section of railway track, contribute to the setting. Stone steps lead to the rear garden, which is mainly laid to lawn and bordered by trees, shrubs and flowers. A potting shed provides further storage, with a television mast also installed.

Additional Information

We are advised mains electricity and water are connected, with oil fired central heating installed and private cesspit drainage. The neighbouring property has a pedestrian right of way across the frontage of 4 Edwards Pill, providing access to their garden.

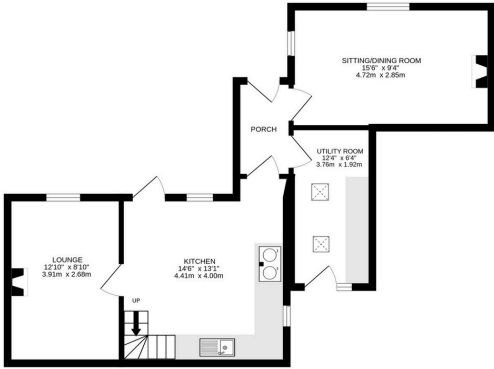
Council Tax Band

D (£1510.72)

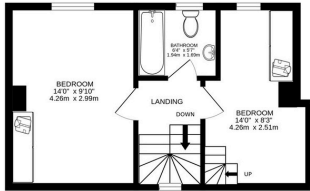




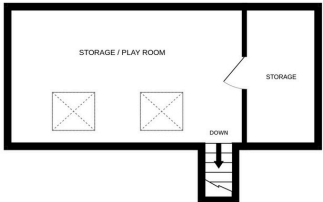
GROUND FLOOR
532 sq.ft. (49.4 sq.m.) approx.



1ST FLOOR
312 sq.ft. (29.0 sq.m.) approx.

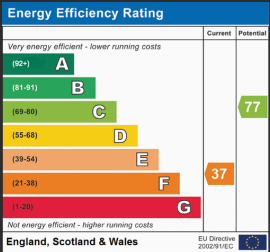


2ND FLOOR
271 sq.ft. (25.2 sq.m.) approx.



TOTAL FLOOR AREA : 1115 sq.ft. (103.6 sq.m.) approx.

Whilst every attempt has been made to ensure the accuracy of the floorplan contained here, measurements of doors, windows, rooms and any other items are approximate and no responsibility is taken for any error, omission or mis-statement. This plan is for illustrative purposes only and should be used as such by any prospective purchaser. The services, systems and appliances shown have not been tested and no guarantee as to their operability or efficiency can be given.
Made with Metropix ©2025



While we endeavour to make our sales particulars fair, accurate and reliable, they are only a general guide to the property and, accordingly, if there is any point which is of particular importance to you, please contact the office and we will be pleased to check the position for you, especially if you are contemplating travelling some distance to view the property. These approximate room sizes are only intended as general guidance. You must verify the dimensions carefully before ordering carpets or any built-in furniture. Please note we have not tested the services or any of the equipment or appliances in this property, accordingly we strongly advise prospective buyers to commission their own survey or service reports before finalising their offer to purchase.

THESE PARTICULARS ARE ISSUED IN GOOD FAITH BUT DO NOT CONSTITUTE REPRESENTATIONS OF FACT OR FORM PART OF ANY OFFER OR CONTRACT. THE MATTERS REFERRED TO IN THESE PARTICULARS SHOULD BE INDEPENDENTLY VERIFIED BY PROSPECTIVE BUYERS OR TENANTS. NEITHER BRYCE & CO ESTATES LIMITED NOR ANY OF ITS EMPLOYEES OR AGENTS HAS ANY AUTHORITY TO MAKE OR GIVE ANY GUARANTEES OR WARRANTIES WHATSOEVER IN RELATION TO THIS PROPERTY.