



West Walden

Ludchurch, Narberth, SA67 8JF

Guide Price: £355,000 | Freehold | EPC: E



Situated in the sought-after village of Ludchurch, just a short drive from the market town of Narberth, this detached three-bedroom bungalow has been fully renovated throughout. Offering spacious open-plan living, well-proportioned double bedrooms, a generous rear garden, and a sizeable garage, it presents an excellent opportunity for prospective buyers.

Upon entering, the welcoming hallway immediately gives a sense of space and light. Flowing seamlessly into the kitchen, this well-appointed area features a range of matching base and eye-level units with high-end integrated appliances. The open-plan layout extends to a stylish dining area, perfect for family gatherings, and leads into a spacious lounge centred around a striking log burner. The property comprises three well-sized double bedrooms, all benefiting from fitted wardrobes, while the bathroom is elegantly appointed with a tiled bath, walk-in shower, and recessed shelving with downlighting, adding a touch of luxury.

Externally, a large gravelled driveway provides ample parking and access to the adjoining garage. The property enjoys strong kerb appeal, with a front garden featuring a small lawn and bordered surrounds, enclosed by dwarf stone walls. The rear garden offers a blank canvas, ideal for those looking to personalise the outdoor space, primarily laid to lawn with a patio area, enclosed for added privacy.

Ludchurch is a charming village in South Pembrokeshire, approximately four miles from Narberth, which offers a variety of independent shops, services, and amenities. The stunning Pembrokeshire coast is around three miles away, with a choice of blue flag beaches and popular seaside resorts, including Amroth, Saundersfoot, and Tenby. The main A477 road is just two miles away, providing convenient links to St Clears, Carmarthen, and the M4.



Entrance Hallway

Entered through a uPVC glazed front door, this generously sized hallway provides a practical space for storing shoes and outerwear. Integrated storage is available. Doors lead to receptions, bedrooms and bathroom.

Kitchen

7.10m x 2.60m (23'4" x 8'6")

Featuring oak-effect laminate flooring, this kitchen is fitted with a range of matching eye and base level units, marble-effect worktops, and tiled splash backs. Integrated appliances include a fridge/freezer, dishwasher, wine cooler, washing machine, and an eye-level microwave and double oven with grill. An electric four-ring stove, and a double sink complete the space. A window to the side aspect provides natural light, while a uPVC door offers access to the side pathway.

Lounge / Diner

5.64m x 4.60m (18'6" x 15'1")

A spacious and inviting living area featuring oak-effect laminate flooring and a log burner set on a tiled hearth with an oak mantle above. Wall lighting enhances the ambience, while windows to the side and front aspects allow for natural light. There is ample space for sofas, along with television connections. The dining area features fitted corner seating with a marble-effect table.

Bathroom

3.14m x 2.60m (10'4" x 8'6")

Fitted with tiled flooring and walls, this bathroom includes a WC with a concealed cistern, a wash hand basin set within an oak vanity unit, and a mirrored cabinet above. A walk-in shower with a rainfall head and glass screen sits alongside a bath with a tiled surround and shower head attachment. Recessed tiled shelving provides additional storage. A glazed window to the side aspect, a heated towel rail, and an extractor fan complete the space.

Master Bedroom

4.20m x 3.30m (13'9" x 10'10")

A well-proportioned double bedroom featuring laminate flooring, fitted wardrobes, and television connections. A window to the rear aspect provides natural light and overlooks the garden and patio.

Bedroom Two

3.68m x 3.00m (12'1" x 9'10")

A spacious double bedroom with laminate flooring, fitted wardrobes, and television connections. A rear-facing window allows for natural light and overlooks the garden and patio.

Bedroom Three

3.30m x 2.66m (10'10" x 8'9")

A comfortable double bedroom with laminate flooring, fitted wardrobes, and a window to the side aspect allowing natural light.

Garage

7.20m x 3.10m (23'7" x 10'2")

Accessible via an up-and-over door, this space benefits from electricity and lighting. A rear-facing window and door lead to the patio area. Ideal for vehicle storage or as a workshop.

External

A gravelled driveway offers ample parking for multiple vehicles and access to the garage. The front garden features a small lawn with bordered surrounds, enclosed by dwarf stone walls. The rear garden is primarily laid to lawn with a patio area, enclosed by fencing for added privacy.

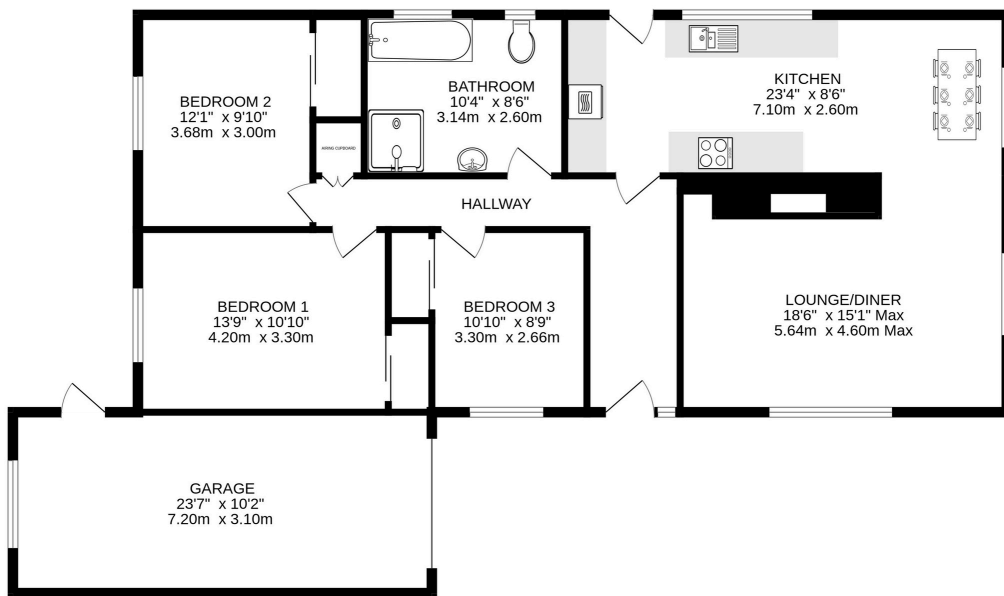
Additional Information

We are advised that mains services are connected. The property has oil central heating.

Council Tax Band

E (£1,846.43)

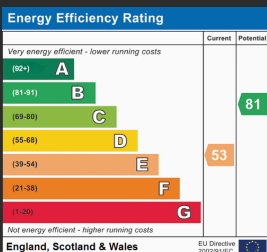




TOTAL FLOOR AREA: 1316 sq.ft. (122.2 sq.m.) approx.

Whilst every attempt has been made to ensure the accuracy of the floorplan contained here, measurements of doors, windows, rooms and any other items are approximate and no responsibility is taken for any error, omission or mis-statement. This plan is for illustrative purposes only and should be used as such by any prospective purchaser. The services, systems and appliances shown have not been tested and no guarantee as to their operability or efficiency can be given.

Made with Metropix 5/2025



While we endeavour to make our sales particulars fair, accurate and reliable, they are only a general guide to the property and, accordingly, if there is any point which is of particular importance to you, please contact the office and we will be pleased to check the position for you, especially if you are contemplating travelling some distance to view the property. These approximate room sizes are only intended as general guidance. You must verify the dimensions carefully before ordering carpets or any built-in furniture. Please note we have not tested the services or any of the equipment or appliances in this property, accordingly we strongly advise prospective buyers to commission their own survey or service reports before finalising their offer to purchase.

THESE PARTICULARS ARE ISSUED IN GOOD FAITH BUT DO NOT CONSTITUTE REPRESENTATIONS OF FACT OR FORM PART OF ANY OFFER OR CONTRACT. THE MATTERS REFERRED TO IN THESE PARTICULARS SHOULD BE INDEPENDENTLY VERIFIED BY PROSPECTIVE BUYERS OR TENANTS. NEITHER BRYCE & CO ESTATES LIMITED NOR ANY OF ITS EMPLOYEES OR AGENTS HAS ANY AUTHORITY TO MAKE OR GIVE ANY GUARANTEES OR WARRANTIES WHATSOEVER IN RELATION TO THIS PROPERTY.